

155 Top Quality Nominated Kiwi X Herd, BW 135, PW 170

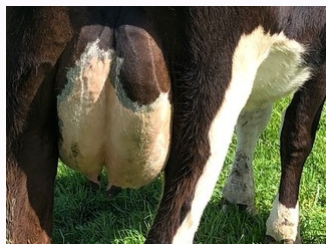
\$1,975 / Head

Dairy / Herd

Ref No. 01-008653

<https://www.agonline.co.nz/listing/8654>

Views: 593



CLOSING

14/01/2021 11:59 pm

DELIVERY

Forward

REPS

Warren Caskey

06 7622851

027 432 1384

Warren.Caskey@poggwrightson.co.nz

BREED
Kiwi XTALLY
155BW
135/55PW
170/64GENETICS
No

Long established Herd, using the very best CRV Ambreed and LIC Sires. Bred for type, size, udder conformation, SCC and fertility. This herd is in the top 2% for SCC for Fonterra and farmed on a low input system 1 farm. "Quality Cows"

Stock data

Breed	Kiwi X	Total cows in milk	180
Approx final tally (after sales & culls)	155	Tally - 2 yr	41
Tally - 3 yr	32	Tally - 4 yr	26
Tally - 5 yr	26	Tally - 6 yr	24
Tally - 7 yr	17	Tally - 8 yr	9
Tally - 9 yr plus	19	% Friesian	1
% Jersey	4	% Kiwi X	95
Sale age range excludes animals born prior to	2012	Farm Contour	Undulating
No. of years herd owned	50		

Breeding

BW	135	BW rel	55
PW	170	PW rel	64
Rec anc%	100	Breeding background	LIC,Ambreed
No of weeks AI	4	Semen company	Ambreed
Pred. AI breed	KiwiX	Other AI Breed	Frns,Jsy
Breed NM	KiwiX	Date bull removed	01 Jan 2021
Bull DNA tested	No	Bull BVD tested	No
Calving start	28 Jul 2021	Calving end	10 Oct 2021

Health

TB status	C10	EBL status	Free
Current lepto vaccination	Yes	Vaccinated for Roto virus	Yes
Vaccinated for BVD	Yes	Bull BVD vaccinated	Yes
Shed drenched	No	Tails on	Yes

Production

Factory kg MS from previous season	64865	No. of cows in milk at December previous season	180
Avg M/S per cow	360	Effective Ha	71
Cows/ha	2.5	SCC last year	76000
SCC current	65000	Shed type	Herringbone
Milked by	Sharemilker		